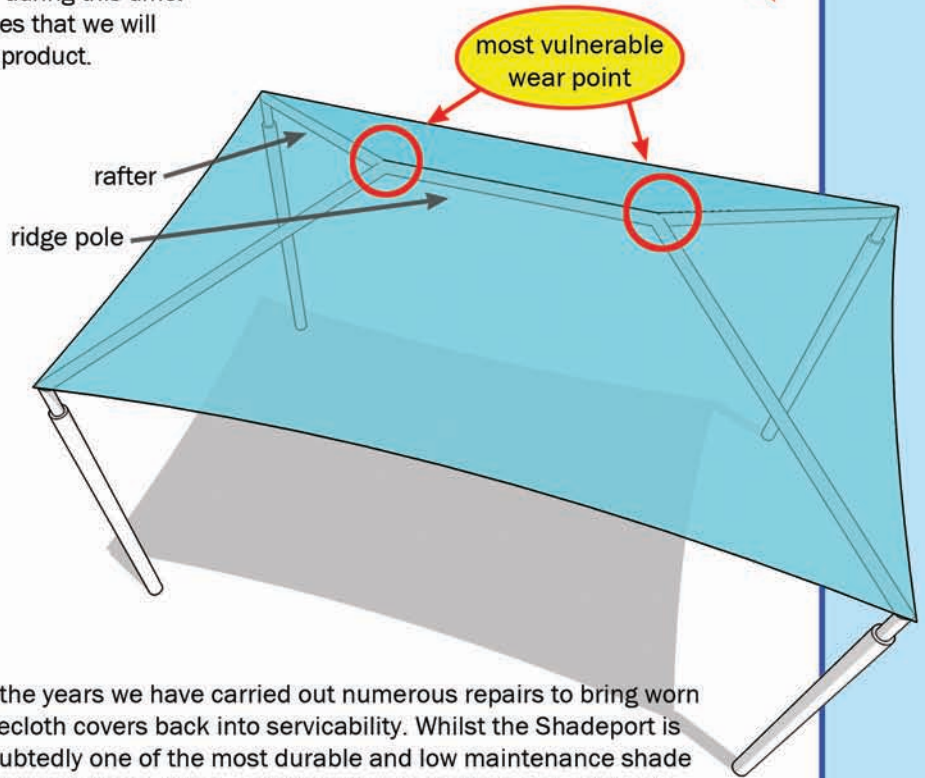
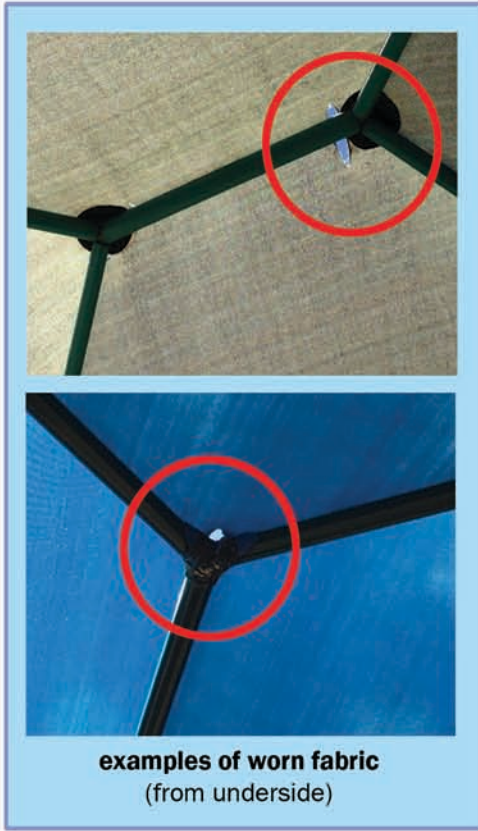


# Ridge Anti-Wear Protectors

**NEW!**

Shadeport SA has been established in SA since 1992 and has supplied and installed several thousand structures during this time. Our accumulated knowledge and experience ensures that we will deliver a robust, long lasting and low maintenance product.

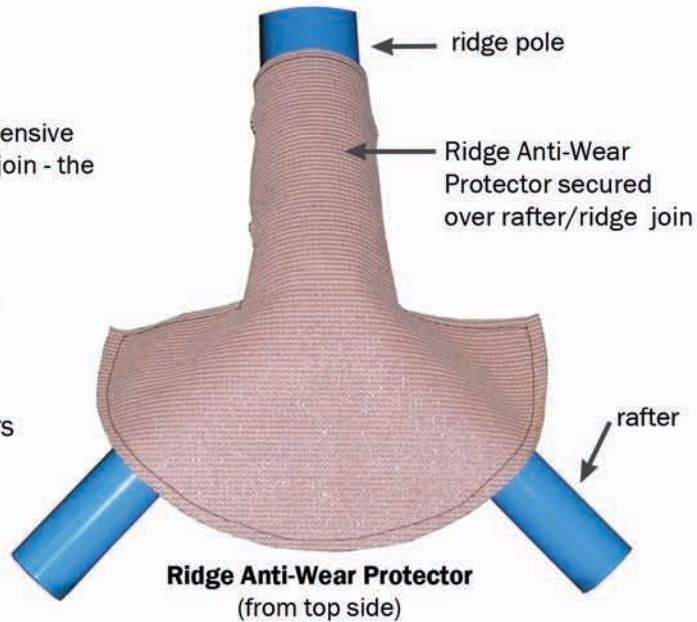


Over the years we have carried out numerous repairs to bring worn shadecloth covers back into servability. Whilst the Shadeport is undoubtedly one of the most durable and low maintenance shade products available, when carrying out repairs the most common wear point is where the rafters meet the ridge pole. Because the Shadeport fabric is tensioned over the steel frame, the fabric is in contact with the framework and thus wear can occur under wind loading over a period of time.

## Ridge Anti-Wear Protectors

With this in mind, we have developed a simple and inexpensive solution to minimise the risk of wear at their ridge/rafter join - the 'Ridge Anti-Wear Protector'.

- Reduces potential wear at the most vulnerable point
- Manufactured in high quality Shadecloth
- Colour can be matched to new or existing fabric covers
- Can be retro fitted to existing structures
- Extends practical life of shade cover
- Keeps repair and replacement costs to a minimum
- Inexpensive addition with cost saving benefit
- Securely fixed to ridge pole



**SHADEPORT**  
SOUTH AUSTRALIA  
08 8354 2116  
www.shadeport.com.au

Ridge Anti-Wear Protectors